

NYU Law – Installing Site Studio Contributor

TOPIC:

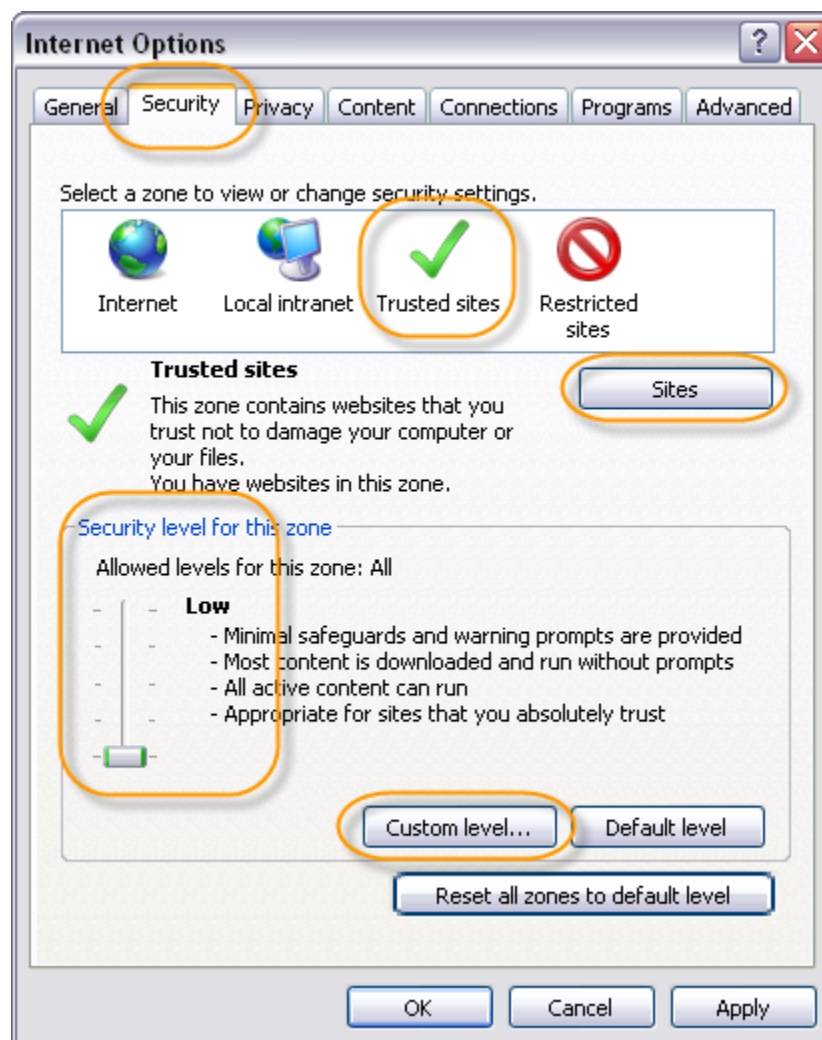
First time installation necessary for Contributor Mode access



Site Studio Contributor needs to be installed before you can edit the Web site. Use Internet Explorer Version 7 (IE7). The first time you log in to Contributor Mode using the keyboard combination Ctrl-Shift-F5, you will be prompted to install Site Studio Contributor.

In order to ensure a smooth installation, you will need to have your security settings defined in the following way.

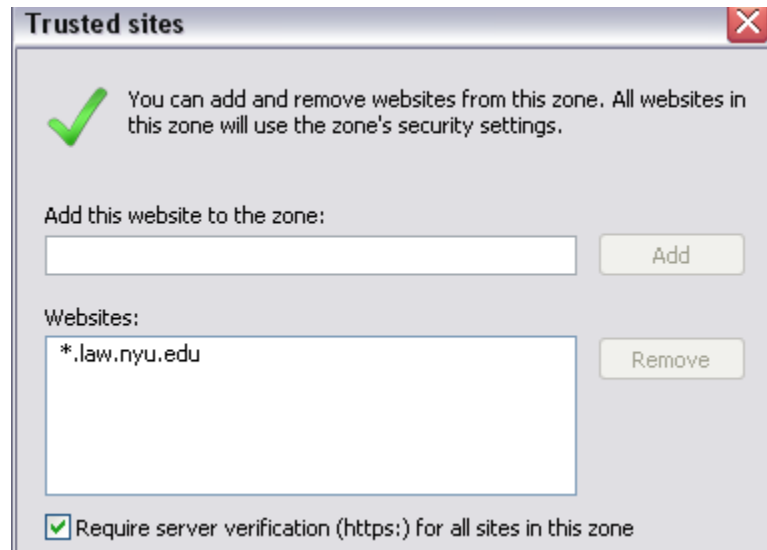
In IE7, go to Tools > Internet Options > Security. Set your Trusted sites to **Low** by dragging the slider down to its lowest level.



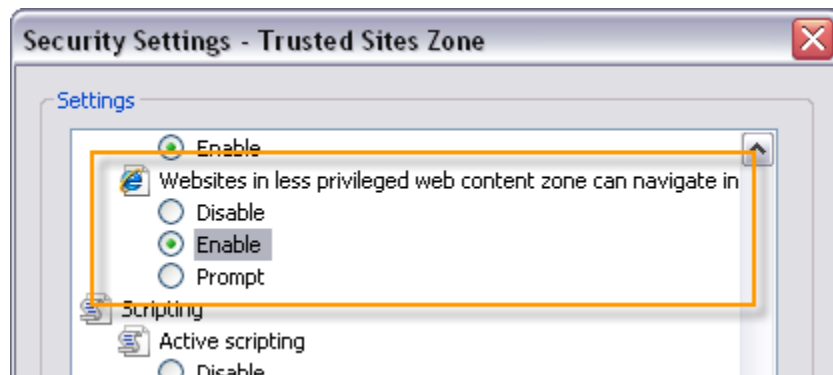
NYU Law – Installing Site Studio Contributor

In the same Security tab, click on the “Sites” button and

- 1) Uncheck “require server verification” checkbox
- 2) Add “*.law.nyu.edu” to trusted sites
- 3) Check “require server verification” checkbox
- 4) Select Close



An additional security setting can be enabled while in the Security tab to allow searching on the Web site to be free of prompts. Click on the “Custom level...” button, scroll down about 3/4 of the way to find and select the “Enable” radio button underneath “Websites in less privileged web content zone can navigate into this zone”.



After you click on the “OK” button, you will be prompted to confirm your action. Click “Yes” > “Apply” > “OK”

Now you should have a straightforward install of Site Studio Contributor.