

# NYU Law –Web Help: Design Pullquotes

## TOPICS:

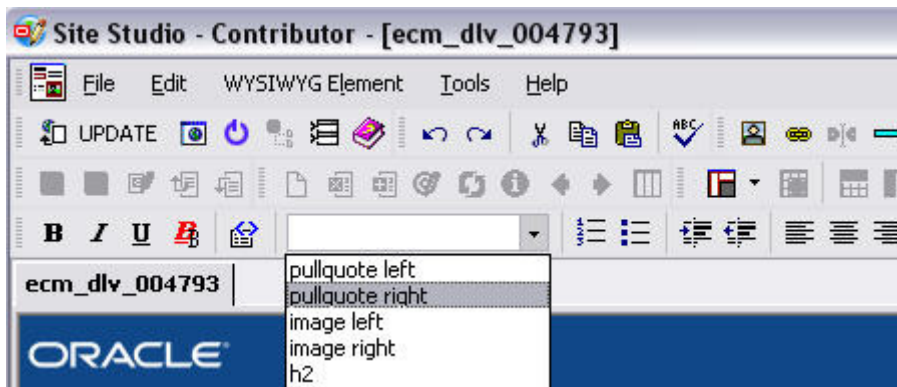
Insert Pullquotes  
Edit Pullquotes



Pullquotes are blocks of text on your webpage that can be presented graphically to stand out from the rest of your text.

In the Main Content Editor Screen of the Oracle Site Studio Contributor Mode:

- 1. Highlight the text\* you want to include in your pullquote.**
- 2. Select either "pullquote left" or "pullquote right" from the dropdown box on the toolbar to determine which side of the page your quote will show up on.**



- 3. The inherent font color, style and size will be automatically applied.**

\*Pullquotes remove the text from the paragraph. If you would like it to be in both the paragraph and the quote, add the text twice. Highlight the second line of text and apply pullquote styling. This will allow for the quote to be highlighted on page and still present in the body of the text.

## NYU Law –Web Help: Design Pullquotes

Pullquote with singular text:

### A Walk for Every Season

Let's face it: although it's quite likely that where you came from your car is your status symbol, attempting to keep a car on the streets of Manhattan is a symbol of idiot status. Unless you can afford the \$400+ dollars it's going to cost you to have it sit in a garage, leave the thing at home or sell it (the cash will come in handy). Once you hit the books and develop your new routines, you won't have the time to drive anyway. (And once you attempt to drive in Manhattan the first time, you will probably be tempted to jam the gearshift into park in the middle of the block and flee

To get away from it all, I either walk on lower Fifth Avenue or sit in Washington Square, where, perhaps paradoxically, all the action provides a cocoon-like environment.

Pullquote with duplicated text:

### Plantings

While the Park contains many flower beds and trees, relatively little of the park is actually used for plantings due to the paving.

While the Park contains many flower beds and trees, relatively little of the park is actually used for plantings due to the paving. The two prominent features are Washington's Arch and a large fountain. It includes children's play areas, trees and gardens, paths to stroll on, a chess playing area, park benches, picnic tables, commemorative statuary and two dog runs.